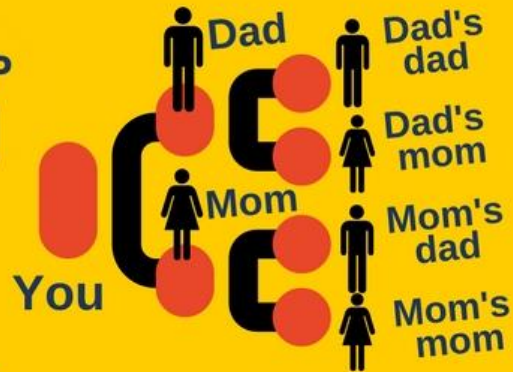


Genealogy 101

A pedigree tree

Start with what you know:
Yourself, your mom & dad.
Men on top. Use a pencil. Use
women's MAIDEN names.

STEP
01



Save your work

BACK UP & ORGANIZE as you
go. Take notes, too. Confirm
facts with 2 or more sources.

STEP
02

Research begins

with your relatives. They may
have family heirlooms, stories,
photos and documents for you.

STEP
03



Many resources

Millions exist online & off.
I really love newspapers.

STEP
04

DNA, 21st c. tool

Big 3: AncestryDNA, 23andMe,
Family Tree DNA. \$99 -199 for
Autosomal, Y-DNA and mtDNA.

STEP
05



The Farmington Libraries present "Getting Started in Genealogy" with Janeen Bjork
Tue, Feb 23, 2021, 6 p.m. info@JaneensList.com , <https://www.facebook.com/janeen.bjork.3>
I send out Genealogy eBlasts, let me know if you'd like to receive them.
My calendar of events: <http://janeenslist.com/events/>

HYPERLINKS IN ORDER OF APPEARANCE IN THE PRESENTATION.

YOU MUST LOG INTO THE FARMINGTON LIBRARIES WEBSITE FIRST FOR THEM TO WORK!

<https://farmingtonlibraries.org>

- Account log-in <https://catalog.farmingtonlibraries.org/cgi-bin/koha/opac-user.pl>

ACCESS TO HISTORICAL HARTFORD COURANT (WSJ, NYTIMES, WAPO) VIA PROQUEST, FREE AT HOME

- <https://search.proquest.com/news/index?accountid=41898&groupid=54360>

ACCESS TO HISTORICAL FARMINGTON VALLEY HERALD AND OTHER LOCAL PUBLICATIONS, ALSO FREE

- <http://farmingtonlibraries.advantage-preservation.com/>

ANCESTRY LIBRARY, FREE AT HOME THROUGH AT LEAST MARCH 31, 2021

- Downloadable charts <https://www.ancestrylibrary.com/download/charts>
- Message boards <https://www.ancestrylibrary.com/boards/>
- Ancestry Learning Center <https://www.ancestrylibrary.com/LearningCenter/>

ONLINE FAMILY TREES

- Free FamilySearch (Church of Jesus Christ of the Latter Day Saints) account (registration with an email address and password required) <https://familysearch.org/en/>
- Free ancestry.com account (register with an email address and password required). You can build a tree here, and retrieve free documents, but you'll need to sign into AncestryLibrary through Farmington Libraries, or have a subscription to see or download most documents. <https://support.ancestry.com/s/article/Creating-a-Free-Ancestry-Account>

LINKS TO SEARCH VIA ANCESTRY LIBRARY: YOU MUST LOG INTO THE LIBRARY WEBSITE FIRST.

- For a broad, untargeted search: <https://www.ancestrylibrary.com/search/>
- Shortcut to the 1940 census search: <https://www.ancestrylibrary.com/search/collections/2442/>
- Shortcut to the 1930 census search: <https://www.ancestrylibrary.com/search/collections/6224/>
- Shortcut to the 1920 census search: <https://www.ancestrylibrary.com/search/collections/6061/>
- Shortcut to the 1910 census search: <https://www.ancestrylibrary.com/search/collections/7884/>
- Search immigration records: <https://www.ancestrylibrary.com/search/categories/40/>
- Shortcut to the 1900 census search: <https://www.ancestrylibrary.com/search/collections/7602/>
- (due to a 1921 fire, only fragments remain of the 1890 census)
- Shortcut to the 1880 census search: <https://www.ancestrylibrary.com/search/collections/6742/>
- Shortcut to the 1870 census search: <https://www.ancestrylibrary.com/search/collections/7163/>
- Shortcut to Vital records (BMD) search: <https://www.ancestrylibrary.com/search/categories/34/>
- Shortcut to Military records search: <https://www.ancestrylibrary.com/search/categories/39/>
- Shortcut to City and Directories: https://www.ancestrylibrary.com/search/categories/dir_city/
- Ancestry Library Card Catalog
<https://search.ancestrylibrary.com/search/cardcatalog.aspx#ccat=hc%3D25%26dbSort%3D1%26sbo%3D1%26>